
COLOR

PALETTE

Audrey
Lane



ARTFULLY
DESIGNED
BY YOU

TIME TO PLAY WITH COLOR

Our multi-color porcelain collection has been carefully selected for its highest resolution visual quality and technical performance characteristics. Many colors are available in a range of sizes and finishes.

Visit audreylane.com to see additional field tile sizes.

MARBLE



Dolomite
Matte & Polished
Group 1



Statuario
Matte & Polished
Group 1

Quick Ship

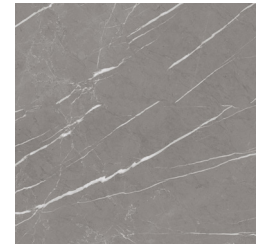


Calacatta
Matte & Polished
Group 1

Quick Ship



Macaubas
Matte & Polished
Group 1



Impero
Matte & Polished
Group 1



Marfil
Matte & Polished
Group 1



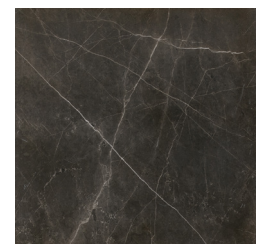
Arcadia
Matte & Polished
Group 1



Pulpis
Matte & Polished
Group 1



Emperador
Matte & Polished
Group 1

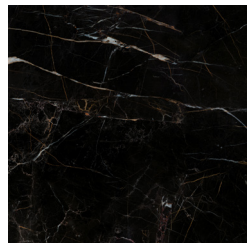


Graphite
Matte & Polished
Group 1

Quick Ship

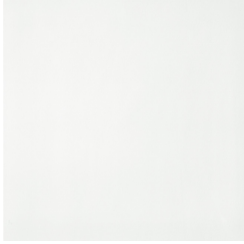


Marquina
Matte & Polished
Group 1



Nero
Matte & Polished
Group 1

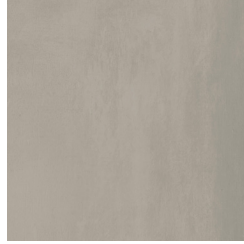
SOLID



Ice White
Matte & Polished
Group 1



Pure White
Matte & Polished
Group 1
Quick Ship, Matte



Dove
Matte
Group 1
Quick Ship



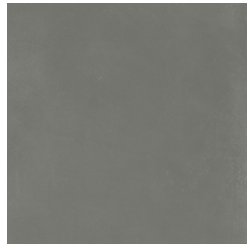
Taupe
Matte
Group 1
Quick Ship



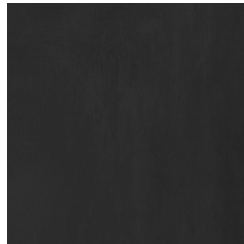
Mocha
Matte
Group 1
Quick Ship



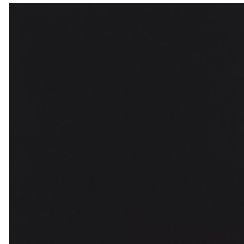
Pearl
Matte
Group 1
Quick Ship



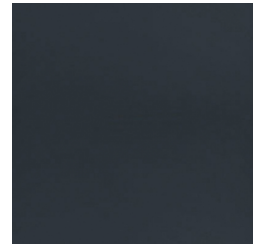
Concrete
Matte
Group 1
Quick Ship



Dark
Matte
Group 1
Quick Ship



Pure Black
Matte & Polished
Group 1
Quick Ship, Matte



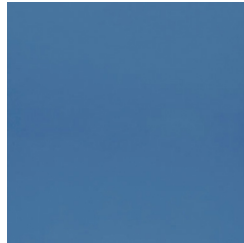
Lake
Matte & Polished
Group 1



Rose
Matte
Group 1



Cotto
Matte
Group 1



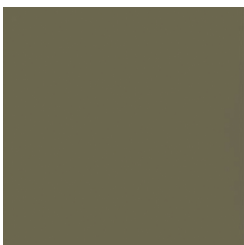
Ocean
Matte & Polished
Group 1



Blue
Matte & Polished
Group 1



Lavender
Matte & Polished
Group 1



Moss
Matte & Polished
Group 1



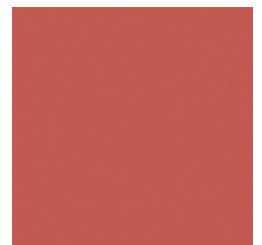
Green
Matte & Polished
Group 1



Yellow
Matte & Polished
Group 1



Orange
Matte & Polished
Group 1

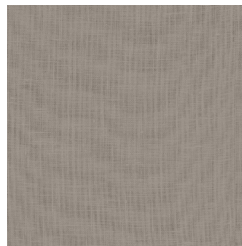


Red
Matte & Polished
Group 1

TEXTILE



Cotton
Matte
Group 1
Quick Ship



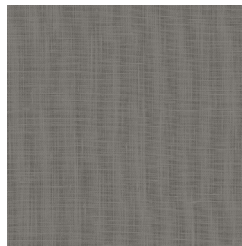
Linen
Matte
Group 1
Quick Ship



Cloth
Matte
Group 1
Quick Ship



Wool
Matte
Group 1
Quick Ship



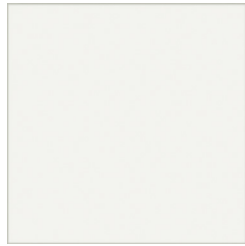
Merino
Matte
Group 1
Quick Ship



Silk
Matte
Group 1
Quick Ship



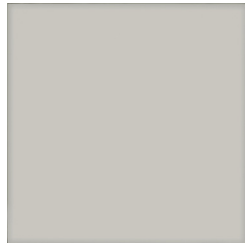
Trend
Matte
Group 1



Shine Bianco
Polished
Group 1
Quick Ship



Shine Bronzo
Polished
Group 1
Quick Ship



Shine Gris
Polished
Group 1
Quick Ship



Shine Pale Blue
Polished
Group 1
Quick Ship



Shine Acqua
Polished
Group 1
Quick Ship

GLASS

TERRAZZO



Small Beige
Matte & Polished
Group 1



Small White
Matte & Polished
Group 1
Quick Ship, Matte



Small Grey
Matte & Polished
Group 1
Quick Ship, Matte



Small Dark
Matte & Polished
Group 1



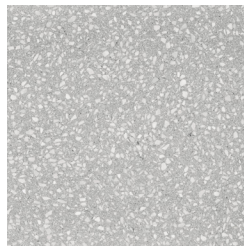
Small Black
Matte & Polished
Group 1



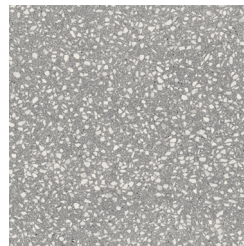
Medium Beige
Matte & Polished
Group 1



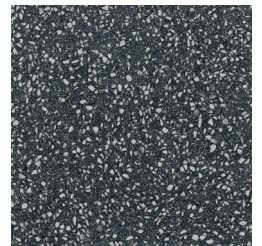
Medium White
Matte & Polished
Group 1
Quick Ship, Matte



Medium Grey
Matte & Polished
Group 1
Quick Ship, Matte

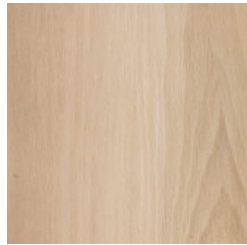


Medium Dark
Matte & Polished
Group 1



Medium Black
Matte & Polished
Group 1

WOOD



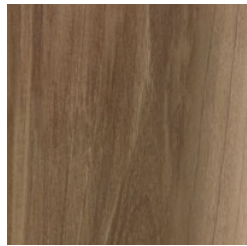
Nordic
Matte
Group 1



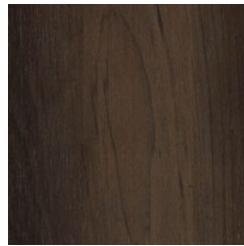
Oak
Matte
Group 1



Noce
Matte & Polished
Group 1



Walnut
Matte
Group 1
Quick Ship



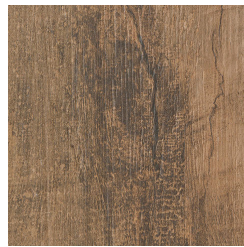
Moro
Matte
Group 1



Weathered Frost
Matte
Group 1



Weathered Rovere
Matte
Group 1

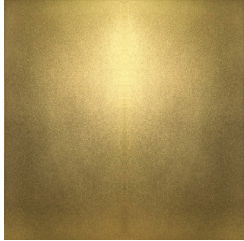


Weathered Quercia
Matte
Group 1



Weathered Cinder
Matte
Group 1
Quick Ship

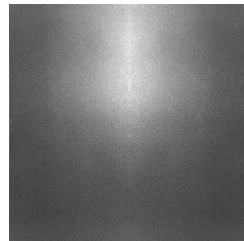
METAL



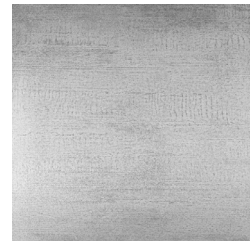
Artic Gold
(Wall Only)
Group 2
Quick Ship



Urban Gold
(Wall Only)
Group 2
Quick Ship



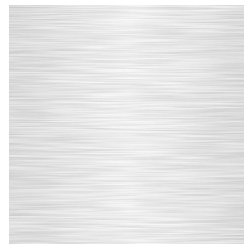
Artic Silver
(Wall Only)
Group 2
Quick Ship



Urban Silver
(Wall Only)
Group 2
Quick Ship



Brass
Brushed
Group 3
Quick Ship



Stainless Steel
Brushed
Group 3
Quick Ship

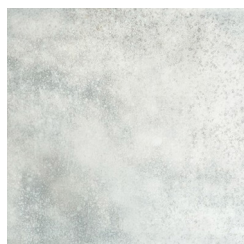


Mint
Matte
Group 1

MIRROR



Mirror
(Wall Only)
Group 3
Quick Ship



Antique Mirror
(Wall Only)
Group 3
Quick Ship



TECHNICAL SPECIFICATIONS

Series	ADA Compliant	Wear Rating PEI	Shade Texture Spectrum (STS)	DCOF ACU test ASTM A137.1	Scratch Hardness Mohs	Water Absorption ASTM C373	Frost Resistance ASTM C1026	LEED	Nominal Thickness	Floor	Wall	Wet Areas	Exterior
Stone Porcelain Matte	Yes	> 3	High	> 0.42	6	< 0.1 %	Resistant	MR ≤ 2 pt, IEQ 1 pt, SS 1 pt*	9-9.5mm	Yes	Yes	Yes	Yes
Stone Porcelain Polished	No	> 3	High	-	5	< 0.1 %	Resistant	MR ≤ 2 pt, IEQ 1 pt, SS 1 pt*	9mm	Low Footfall	Yes	Yes	Yes
Solid Porcelain Matte	Yes	> 4	Moderate	> 0.42	6	< 0.1 %	Resistant	MR ≤ 2 pt, IEQ 1 pt, SS 1 pt*	9mm	Yes	Yes	Yes	Yes
Solid Porcelain Polished	No	> 3	Moderate	-	5	< 0.1 %	Resistant	MR ≤ 2 pt, IEQ 1 pt, SS 1 pt*	9.5mm	Low Footfall	Yes	Yes	Yes
Glass Porcelain Polished	No	-	Moderate	> 0.42	5	< 0.2 %	Resistant	MR ≤ 2 pt, IEQ 1 pt, SS 1 pt*	9mm	Low Footfall	Yes	Yes	Yes
Terrazzo Porcelain Matte	No	-	Moderate	> 0.42	6	< 0.2 %	Resistant	MR ≤ 2 pt, IEQ 1 pt, SS 1 pt*	9mm	Yes	Yes	Yes	Yes
Terrazzo Porcelain Polished	No	-	Moderate	> 0.42	5	< 0.2 %	Resistant	MR ≤ 2 pt, IEQ 1 pt, SS 1 pt*	9mm	Low Footfall	Yes	Yes	Yes
Wood Porcelain Matte	Yes	> 4	Moderate	> 0.42	6	< 0.5 %	Resistant	MR ≤ 2 pt, IEQ 1 pt, SS 1 pt*	9mm	Yes	Yes	Yes	Yes
Artic & Urban Metals	No	-	Moderate	-	-	≤ 3 %	Resistant	-	9.5mm	No	Yes** See Cleaning	Yes** See Cleaning	Yes** See Cleaning
Brushed Brass & Stainless Steel	N/A	-	-	-	-	-	-	-	9mm	Yes** See Cleaning	Yes** See Cleaning	No	No
Mirror	N/A	-	-	-	-	-	-	-	9.5mm	No	Yes	No	No

*HEAT ISLAND EFFECT REDUCTION: Light colored tiles used in outdoor areas help reduce heat island effect. All thanks to the high values of solar reflectance coefficient of porcelain products.

**CLEANING ARTIC & URBAN METALS: For cleaning excess installation materials before they have dried, use a sponge and plenty of water. For subsequent cleanings we recommend the use of a soft dampened in water and neutral soap. Do not use powder detergents, nor metallic mops or abrasives. Do not use abrasive, acidic or alkaline cleaning products. Use a soft sponge with liquid soap and water to clean the tiles, and then dry them with a new cloth.

CLEANING BRUSHED BRASS & STAINLESS STEEL: Use clean water, pH-neutral cleaning agent, a sponge or cleaning cloth. Ensure that there is no sanding or grinding effect. If necessary, use an alcohol-based cleaner or a cleaner especially developed for brass or polishing paste. Perform routine cleaning regularly in accordance with local conditions. Check cleaning agents before use to determine whether they have a corrosive or damaging effect on the profiles. This also applies to correct dosage during use. Never use agents containing hydrochloric or hydrofluoric acid. Any contact with chlorine bleaching agents, cement residue cleaners, strong acids or alkaline should be avoided

Audrey Lane

ARTFULLY DESIGNED BY YOU

audreylane.com