

Delilah

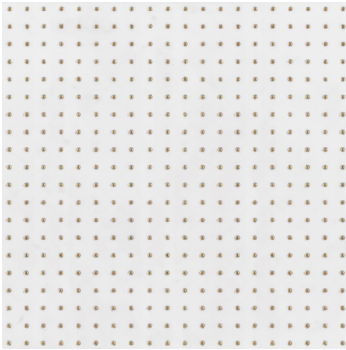
Ceramic Wall Tile



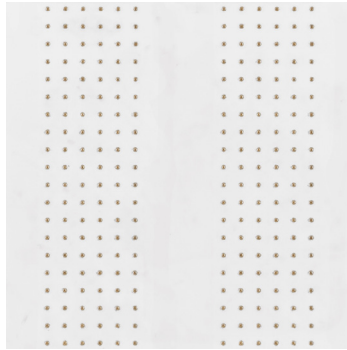
Andrey Lane

Delilah

Ceramic Wall Tile



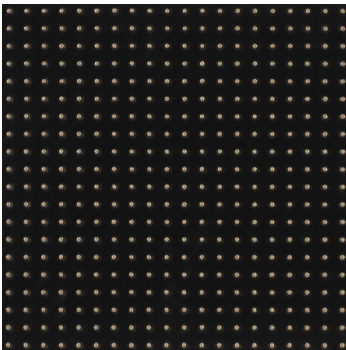
Delilah 1.0 White



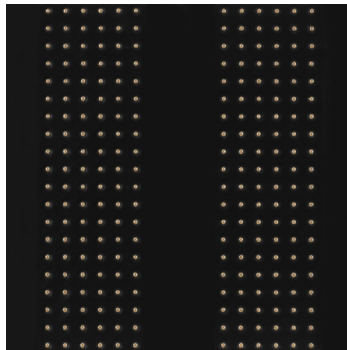
Delilah 2.0 White



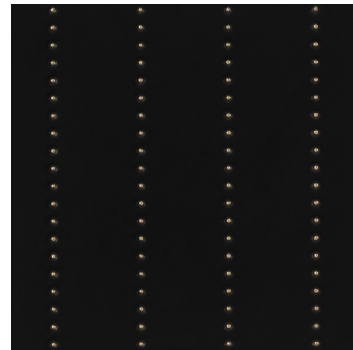
Delilah 3.0 White



Delilah 1.0 Black



Delilah 2.0 Black



Delilah 3.0 Black

*12 × 12 × 9.3mm Nominal Size
Rectified - Recommended Grout Joint 1mm*

CHEMICAL RESISTANCE	RESISTANCE TO STAINS	WATER ABSORPTION	BREAKING STRENGTH	SHADE VARIATION	MOHS HARDNESS	FROST RESISTANCE	CARTON QUANTITY	INTENDED USE
CLASS E	CLASS A	≤ 20%	≥125Lbf	V1	4	No	8.1sf carton 9 pieces	Interior Dry Walls