

# Delilah

Ceramic Wall Tile



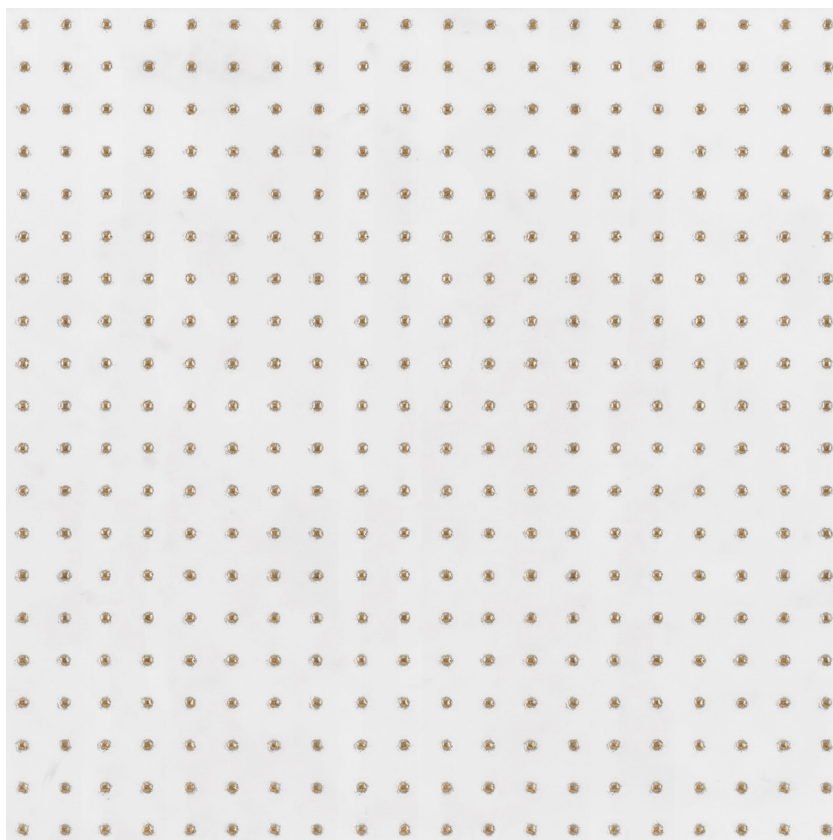
*Andrey Lane*





# Delilah 1.0

*white*



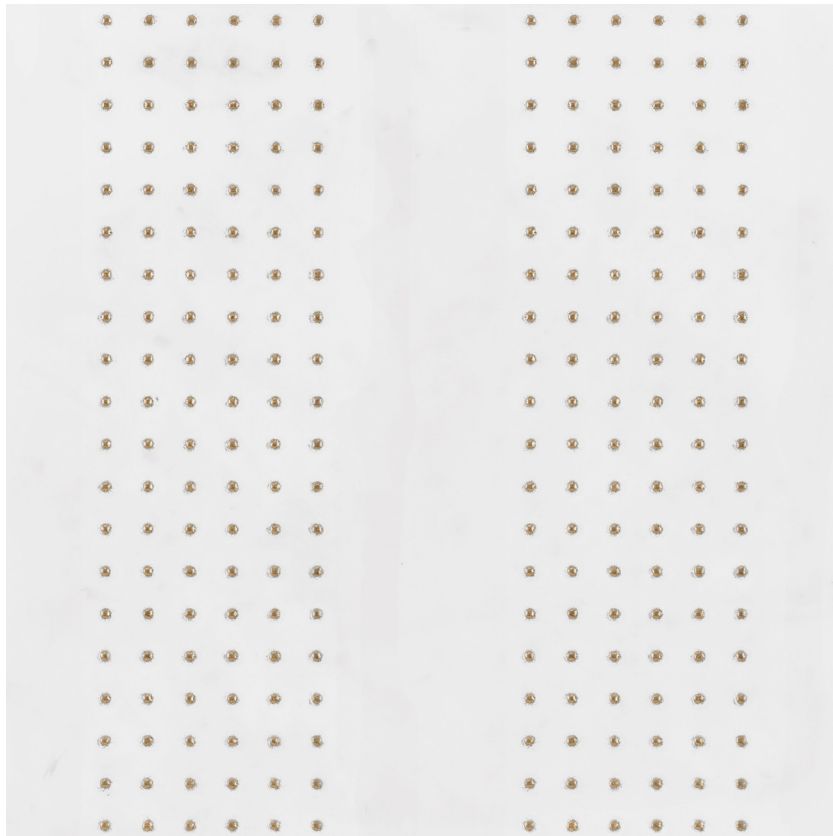
*12 x 12*





# Delilah 2.0

*white*



*12 x 12*

# Delilah 3.0

*white*



*12 x 12*

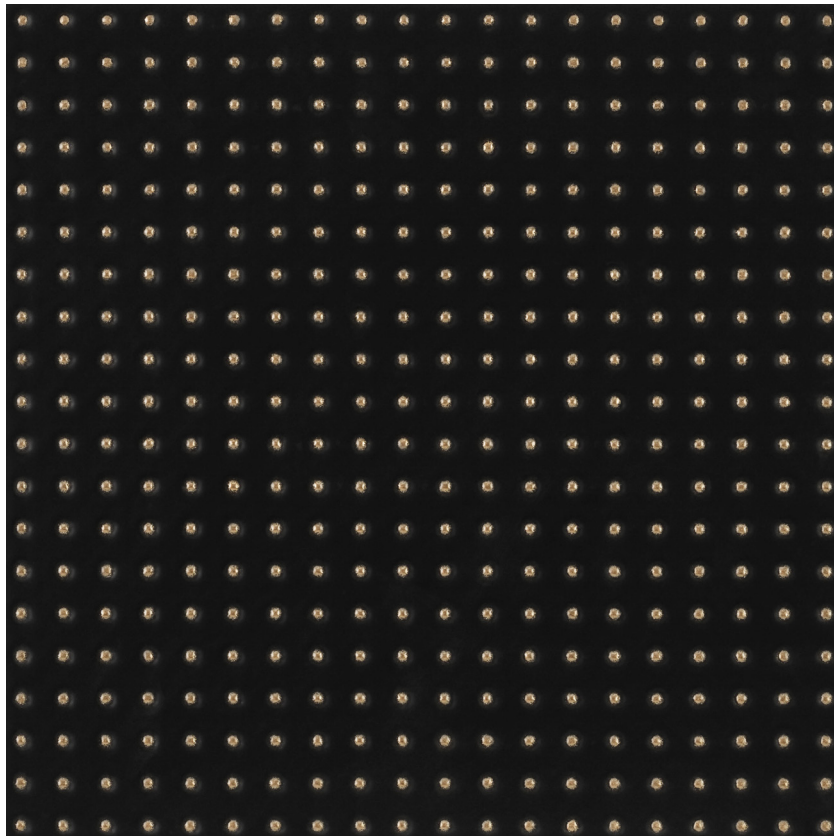






# Delilah 1.0

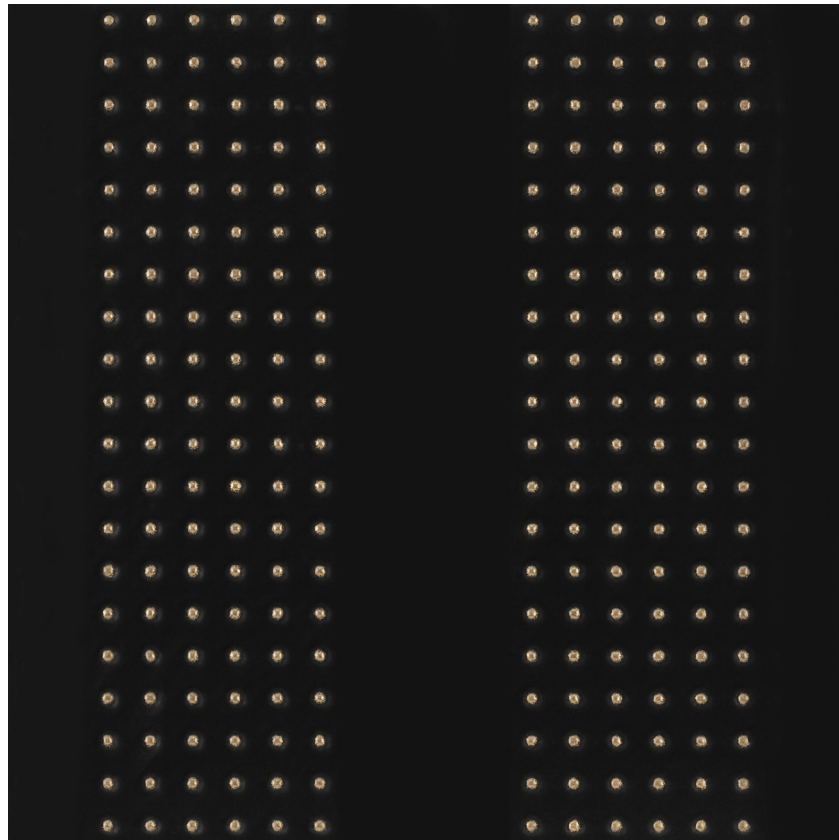
*black*



*12 x 12*

# Delilah 2.0

*black*



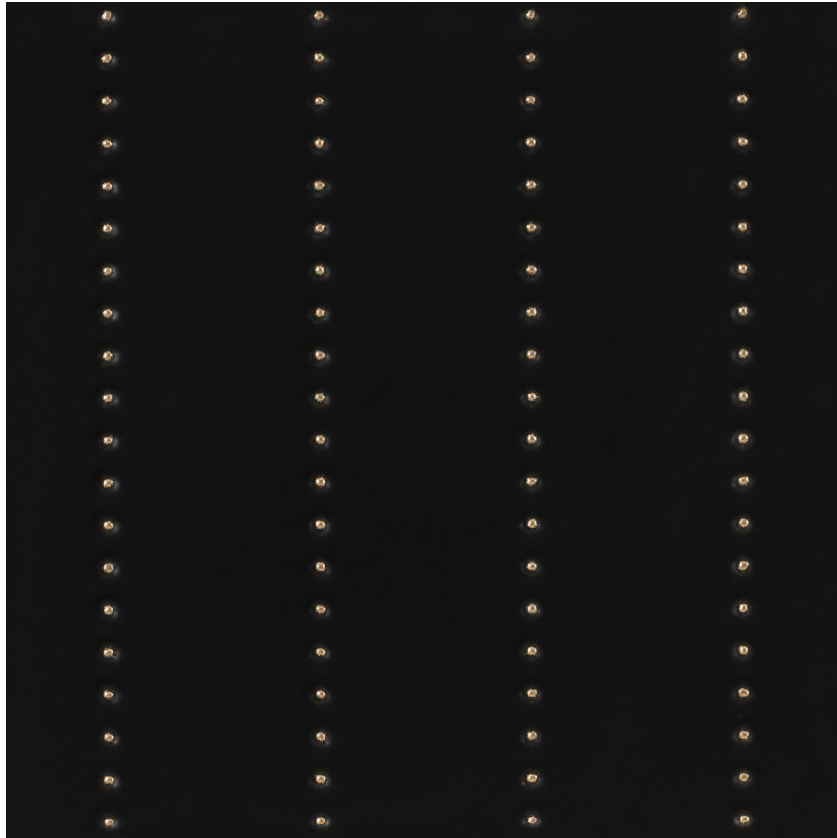
*12 x 12*



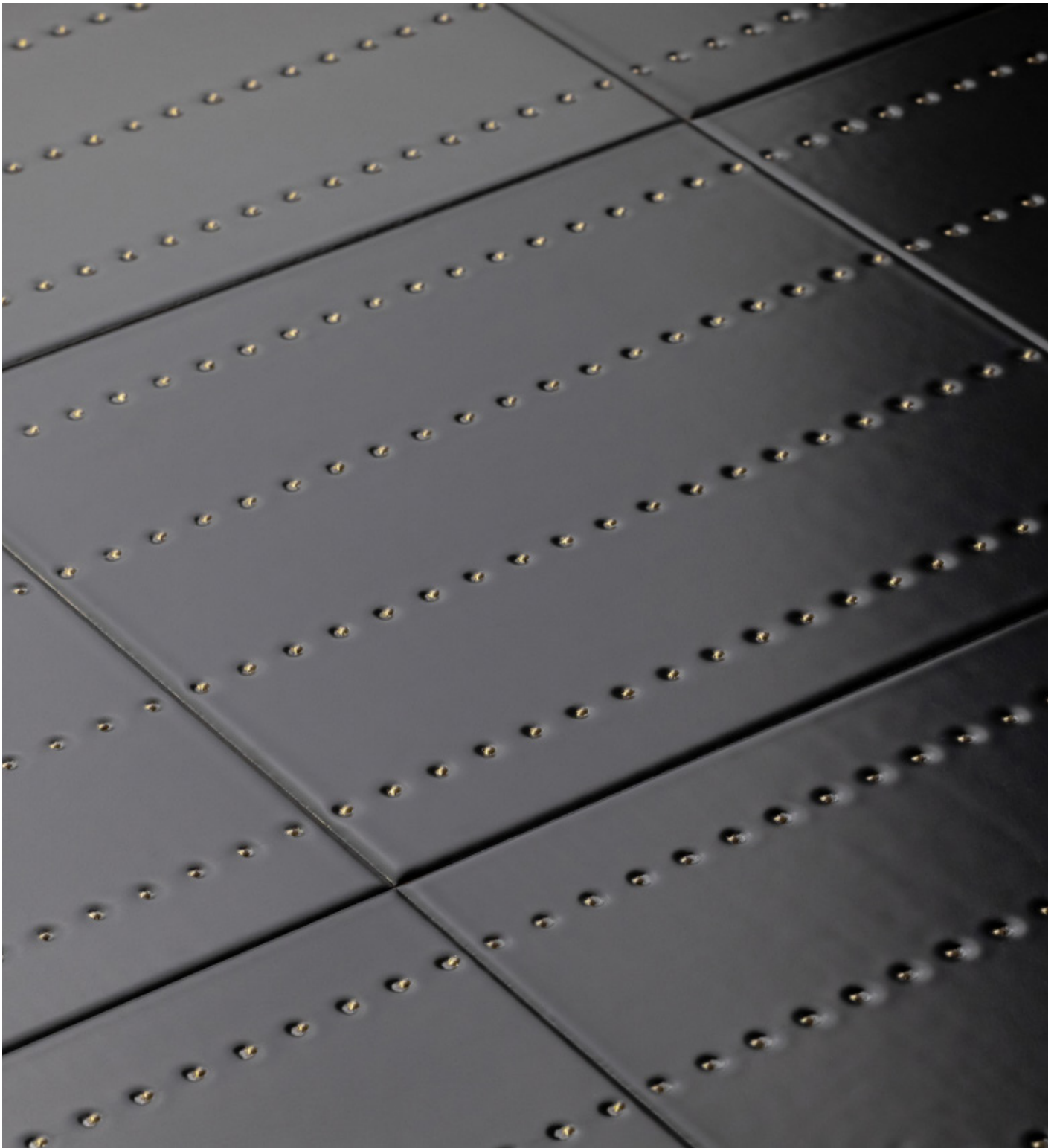


# Delilah 3.0

*black*



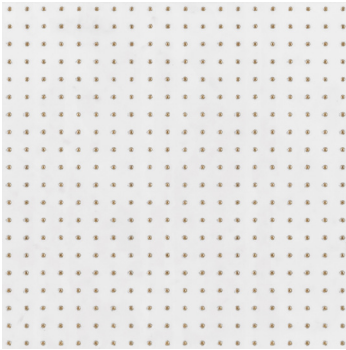
*12 x 12*



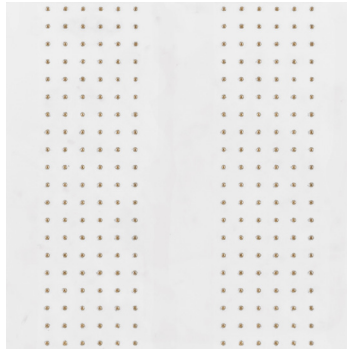


# Delilah

*Ceramic Wall Tile*



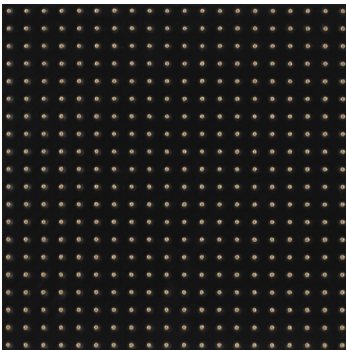
*Delilah 1.0 White*



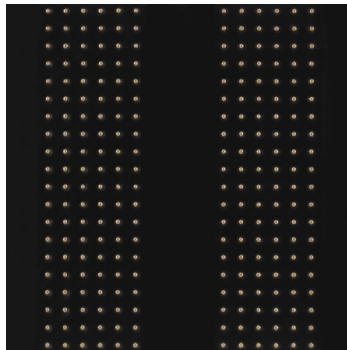
*Delilah 2.0 White*



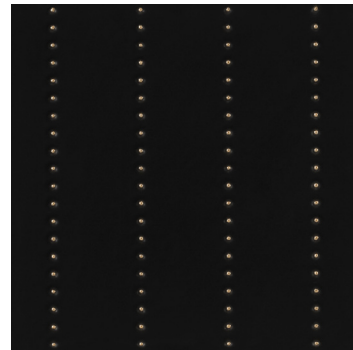
*Delilah 3.0 White*



*Delilah 1.0 Black*



*Delilah 2.0 Black*



*Delilah 3.0 Black*

*12 × 12 × 9.3mm Nominal Size  
Rectified - Recommended Grout Joint 1mm*

CHEMICAL RESISTANCE	RESISTANCE TO STAINS	WATER ABSORPTION	BREAKING STRENGTH	SHADE VARIATION	MOHS HARDNESS	FROST RESISTANCE	CARTON QUANTITY	INTENDED USE
CLASS E	CLASS A	≤ 20%	≥125Lbf	V1	4	No	8.1sf carton 9 pieces	Interior Dry Walls



*Audrey Lane*

audreylane.com